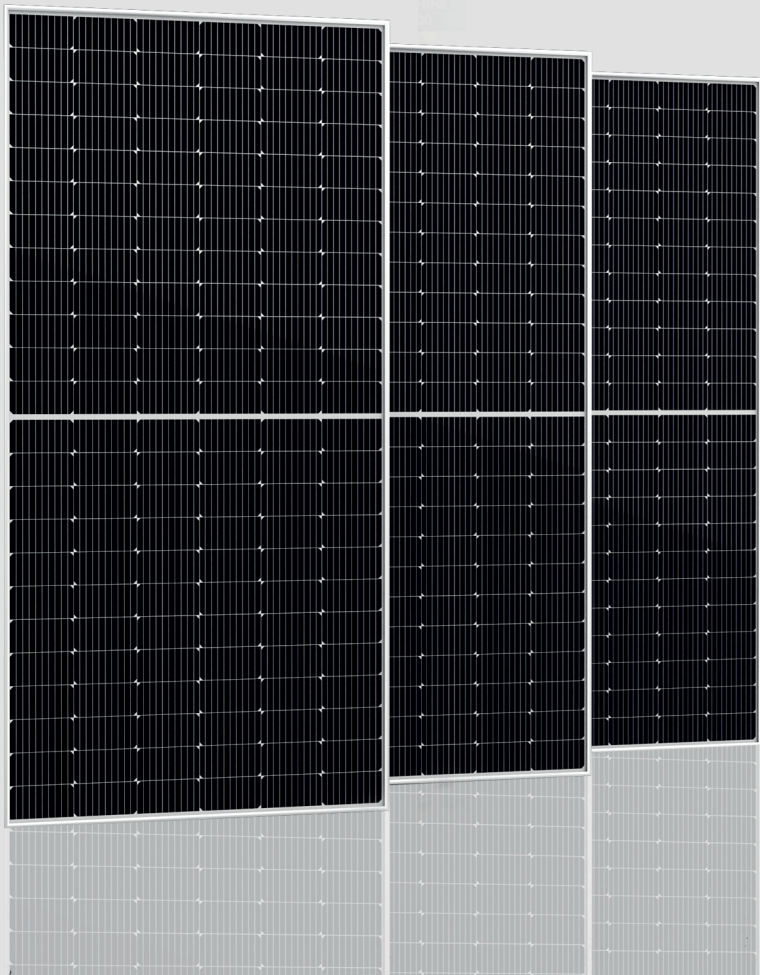




PIXON
Redefining Solar



1.3 GW+

**SOLAR MODULE MANUFACTURING
COMPANY**



About **PIXON**

We are a leading Indian Solar Module and Encapsulant Film manufacturing company with an 1.3 GW and 1 GW capacity respectively for advancing the country's clean energy transformation through innovation, AI quality, and sustainability. We are headquartered in Rajkot (Gujarat) and are recognised for state-of-the-art manufacturing infrastructure and commitment to produce highly-efficient photovoltaic (PV) modules and Encapsulant Films (EVA and POE) that meets global standards.

Our manufacturing facility is equipped with the latest fully automated machinery, enabling precision production of advanced Mono PERC, N-type TOPCon, and HJT glass-to-glass modules, with capacities suitable for large-scale utility, commercial, government tenders and residential projects. Our module ranges are designed and tested to deliver superior performance, durability, and higher energy yields under diverse environmental conditions, ensuring long-term reliability and cost-effectiveness for project developers and investors.

65,000+m²

of advanced
production space

1.3 GW+

solar module
production line

1GW

encapsulant film
manufacturing

1,800+

completed installations
across India



OUR VISION

To be the most trusted solar energy brand globally by building purpose driven, reliable, and innovation-led photovoltaic solutions that contribute to a zero-carbon planet.

OUR MISSION

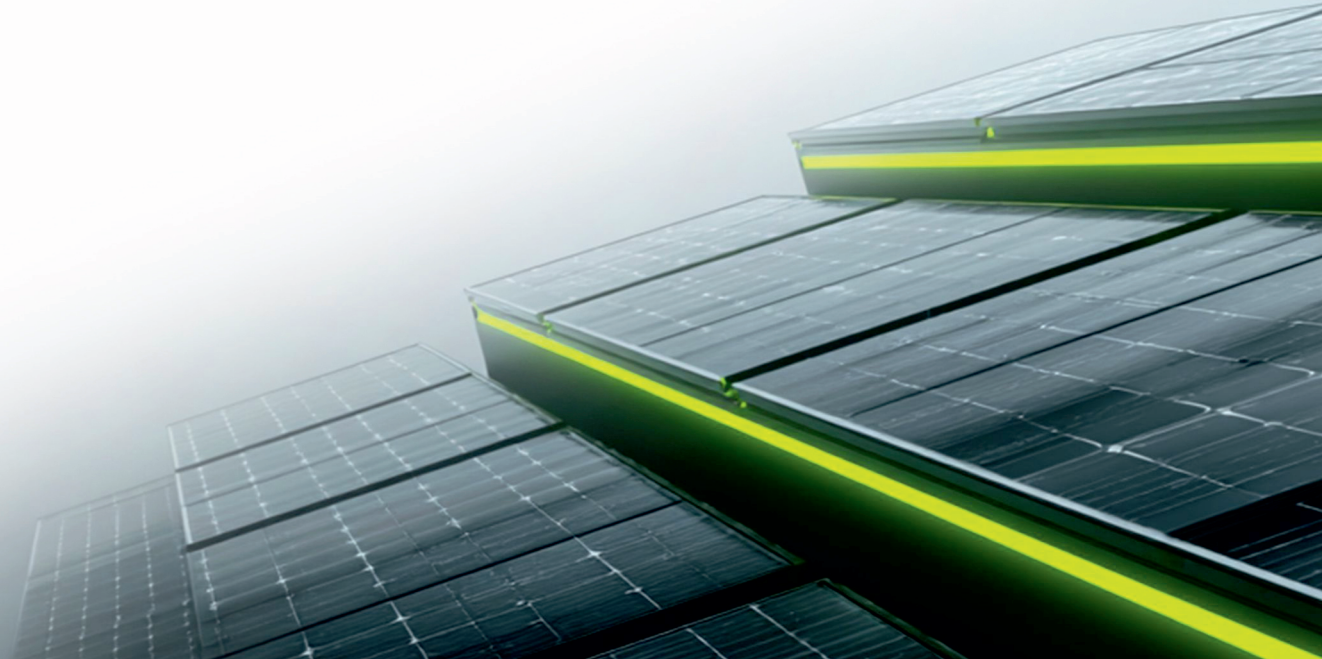
Deliver cutting-edge and efficient solar energy solutions worldwide. Foster environmental stewardship through responsible manufacturing. Empower communities through clean, scalable power.

OUR VALUES

- Customer First
- Quality
- Reliability
- Community Empowerment
- Sustainability

OUR PROMISE

We promise to lead with integrity, innovate with purpose, and care for our planet and communities. Every solar PV module we create is a step toward better energy and a brighter world.



- ❑ **2026**
EPE line having an annual capacity of 1.4 GW.
- ❑ **2025-Q4**
Advancement of quality lab to comply with ASTM, IEC and UL standards, ensuring rigorous testing and required NABL validations.
- ❑ **2025-Q4**
Current Capacity of 250 MW and further planned expansion of a frame Fabrication Unit with an annual capacity of 1.5 GW.
- ❑ **2025-Q4**
We are upgrading our existing 550 MW PERC manufacturing line to a 550 MW N-Type manufacturing line which can support technologies upto G12.
- ❑ **2025-Q3**
One production line compatible with TOPCon, HJT, and Back Contact technologies, featuring an annual capacity of 800 MW respectively.
- ❑ **2022-2024**
Commissioned Module Manufacturing Unit with an annual capacity of 550 MW for Mono PERC and TOPCon half-cell modules.
- ❑ **2021-2022**
Commissioned Encapsulant manufacturing unit with an annual capacity of 1 GW.
- ❑ **2020-2021**
Commissioned a Module Manufacturing Unit with an annual capacity of 400 MW for Poly and Mono PERC Full Cell Modules.
- ❑ **2019-2020**
The company was established and incorporated in December 2019.

OUR JOURNEY

PIXON began in 2019 in Rajkot (Gujarat). We were a small team with a big belief that solar power should be smarter, stronger, and truly built to last.

We set out not just to join the solar industry, but to raise the bar.

In just a few short years, PIXON has grown into a name trusted by engineers, developers and clean energy believers across India.

PIXON is backed by Marwadi Group.



WHAT OUR **5 LAYERS** MEAN

Each PIXON module is **five**
layers of **tech** and **trust**






Solar Modules

Power built to perform

HJT PV Modules

132 HC TOPCon Solar Cell Module (18BB)

 Maximum Power Output
735 Wp



 Efficiency Upto 23.50 %
 Module Warranty/ Output Warranty
12 Year/ 30 Years

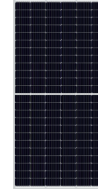


G12 TOPCon PV Module

132 HC TOPCon Solar Cell Module (18BB)

 Maximum Power Output
730 Wp



 Efficiency Upto 21.06 %
 Module Warranty/ Output Warranty
12 Year/ 30 Years



N-Type Mono Modules

G12R – 132 Half Cut Cell
Glass to Glass Solar Modules

 Maximum Power Output
635 Wp



 Efficiency Upto 23.51 %
 Module Warranty/ Output Warranty
12 Year/ 30 Years



N-Type Mono Modules

M10R – 144 Half Cut Cell
Glass to Glass Solar Modules


 Maximum Power Output
605 Wp



 Efficiency Upto 23.04 %
 Module Warranty/ Output Warranty
12 Year/ 30 Years

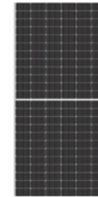


Mono Perc Modules

M10 – 144 Half Cut Cell
Bifacial Dual Glass

 Maximum Power Output
545 Wp

 Efficiency Upto 21.25 %
 Module Warranty/ Output Warranty
12 Year/ 30 Years



Products

Every panel is made in-house from film to frame. It is to ensure total quality, durability, and peace of mind.

Encapsulant Film

The hidden layer that holds it all together

Behind every great solar panel is a great encapsulant and we manufacture our own encapsulant films in-house with our 1GW production capacity.

Our Encapsulant Range:

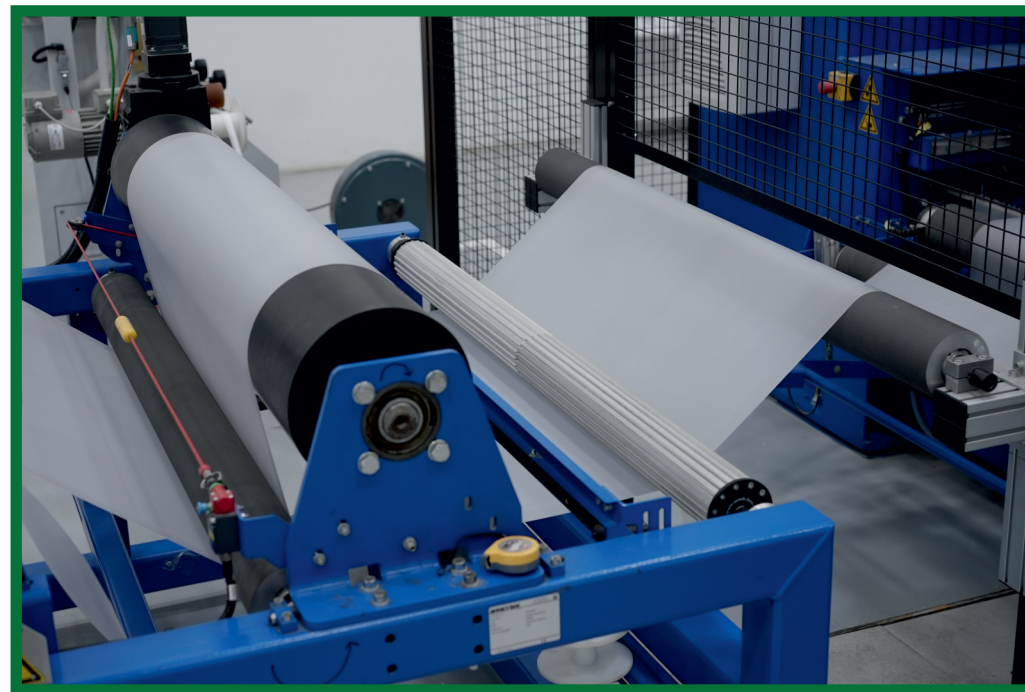
PIX Fast Cure | PIX Ultra-Fast Cure | POE Film

Our Product USP's:

- Strong bonding
- UV and heat resistance
- Low shrinkage and high clarity
- Excellent PID Resistance
- Best Durability
- Maximum Snail Trail Resistance
- All-Weather Reliability
- Advanced Cell Technology
- Dual Glass Durability
- Long-Term Warranty
- Excellent Long-Term Adhesion
- Superior Light Transmittance

Products

Every panel is made in-house from film to frame. It is to ensure total quality, durability, and peace of mind.



KEY PROJECTS



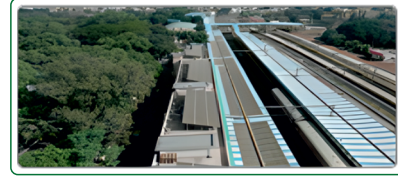
Pixon Green Energy Private Limited
1.1 MW - Rajkot, Gujarat



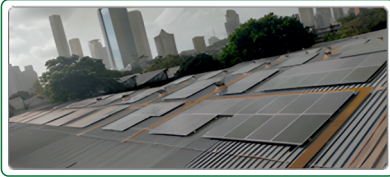
Moradabad Division Railway
419 KW - Moradabad, Uttar Pradesh



Metro Railway
360 KW - Kolkata, West Bengal



SWR (Southern Western Railway)
320 KW - Hubballi, Karnataka



EMU Workshop
300 KW - Mumbai, Maharashtra



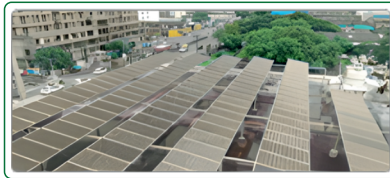
HPCL
200 KW - Bhita, Bihar



Kasturi Enterprise
199.98 KW - Rajkot, Gujarat



Gov. Medical College
150 KW - Thiruvananthapuram, Kerala



Equity Hyundai
121.68 KW - Rajkot, Gujarat



HPCL
120 KW - Kanpur, Uttar Pradesh

OUR CLIENTELE



OUR CERTIFICATION



ALMM
APPROVED



Type Test

PID Certificate

Salt-Mist Certificate

Ammonia Certificate

UL Evaluation Certificate

ISO 14001: 2015 (Environmental)

ISO 9001: 2015 (Quality)

ISO 45001: 2018 (OHS)

UPCOMING **NABL LAB**

NABL-Accredited PV Module Testing Laboratory

- PIXON shall be operating a fully equipped NABL-accredited PV module testing laboratory designed to validate module and Encapsulant Film performance and safety in accordance with global standards such as IEC 61215 and ASTM.
- Electrical performance characterization (STC/NOCT power measurement, I-V curve analysis).
- Reliability and accelerated stress testing (thermal cycling, damp heat, humidity freeze, UV exposure).
- Degradation and defect analysis – PID, LID/LeTID, micro-crack progression, EL & IR imaging.
- Mechanical and environmental stress tests (static/dynamic load, hail, sand abrasion, corrosion & ammonia exposure) and environmental simulation for shipping unit validation.
- The facility shall support type approval, conformity assessment, and continuous quality assurance for crystalline silicon and advanced technology modules, enabling bankability studies and long-term performance validation.
- PIXON's testing ecosystem shall ensure traceable, repeatable, and globally accepted results that strengthen product reliability and market readiness.





PIXON
Redefining Solar

Contact us

PIXON Green Energy Pvt. Ltd.

TollFree : 1800 108 8800 / +91 281 6180000

Address : PIXON Green Energy Pvt. Ltd. R.S. No. 157/1, 158/1, 158/2, 165/1 166 of Khijadiya Nana, R.S. No. 15/1 of Depaliya, Rajkot - Jamnagar Highway, Padadhari, Rajkot, Gujarat, India. - 360110

For any PR, media & marketing queries:

marketing@pixonenergy.in

For any sales or business-related queries:

sales@pixonenergy.com

For any career related queries:

careers@pixonenergy.com

Visit us at

<https://www.pixonenergy.com>

Customer first